

安装流程说明

INSTALLATION PROCESS DESCRIPTION

使用塑料撬棒将中控台盖板撬起

Use the plastic crowbar to open the center console cover, then put it aside.



将中控台的四颗螺丝拧开
Unscrew the four screws of the center console



将中控台电源切断，中控台底部插头拔掉
Cut off the power supply of the center console and unplug the plug at the bottom of the center console.



用塑料撬棒从侧面打开原装档把后盖
Use the plastic crowbar to open the original gear lever rear cover from the side.



拧掉螺丝，卸掉档把。
UNSCREW THE SCREW, REMOVE THE GEAR KNOB



拧下螺丝
UNSCREW THE SCREW



取下盖子，取下排线，然后如图所示，扯出一部分排线
Remove the cover, Remove the cable, Pull out part of the cable



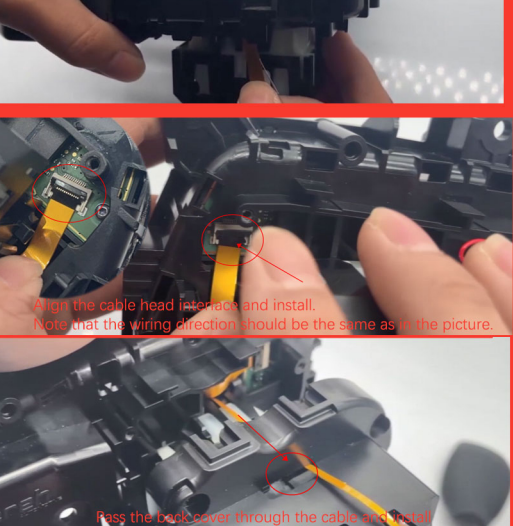
Use tape to stick the two cables together and then intersperse them. Note that the direction of the cables should be the same as in the picture.



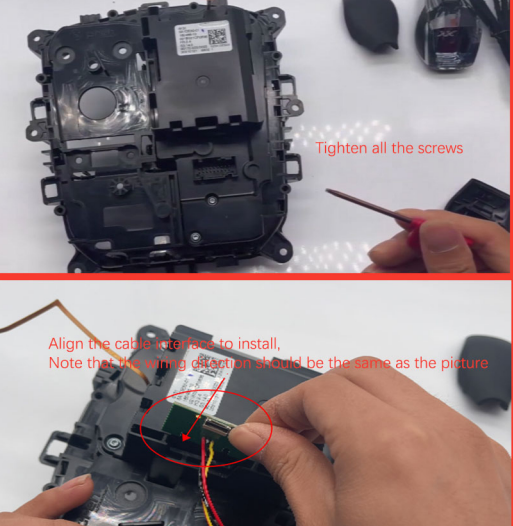
Use tape to stick the two cables together and then intersperse them.



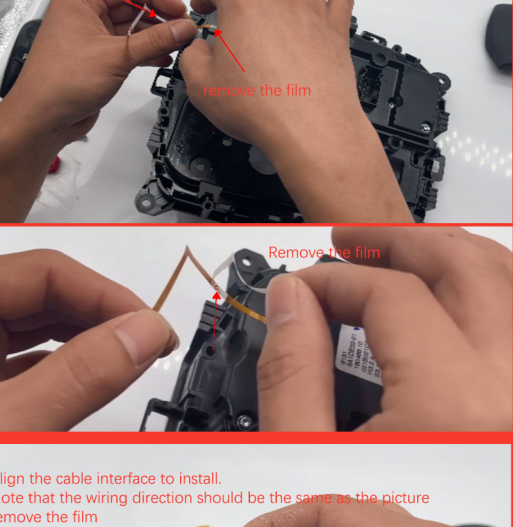
Align the cable with the gear knob



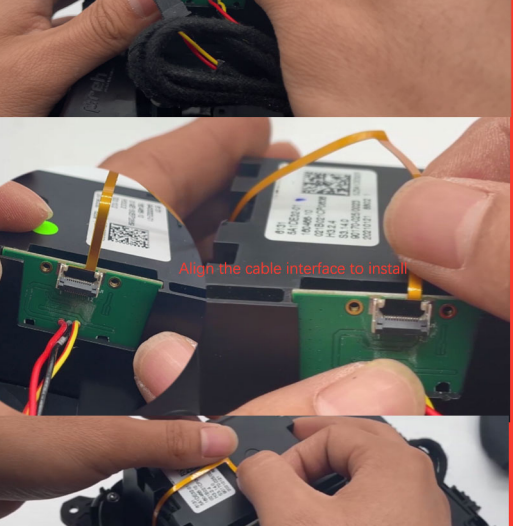
Align the cable head (rear) and install. Note that the wiring direction should be the same as in the picture.



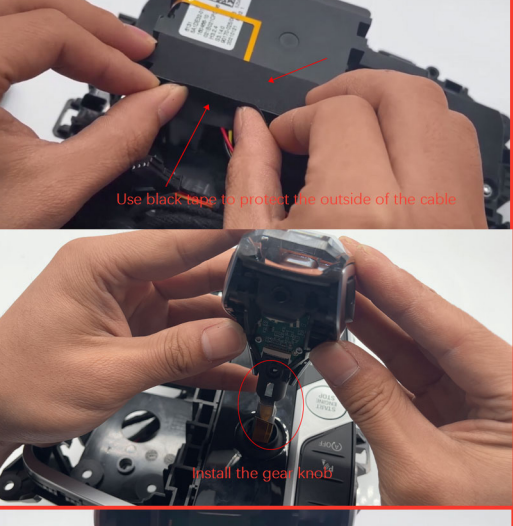
Tighten all the screws



Align the cable interface to install. Note that the wiring direction should be the same as the picture. Remove the film



Align the cable interface to install. Note that the wiring direction should be the same as the picture. Remove the film



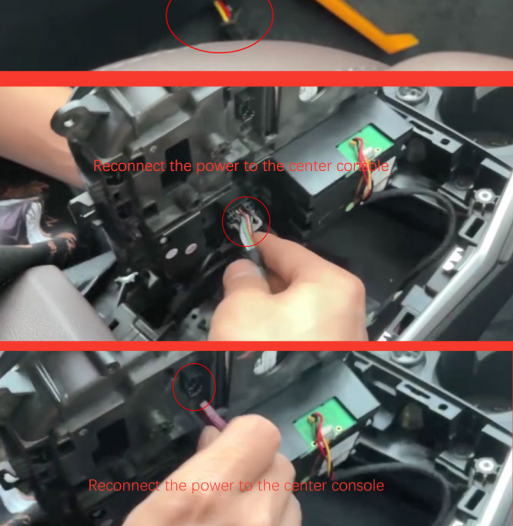
Tear off the tape on the cable and stick it as shown in the picture



Use black tape to protect the outside of the cable



Install the gear knob
Tighten the screws



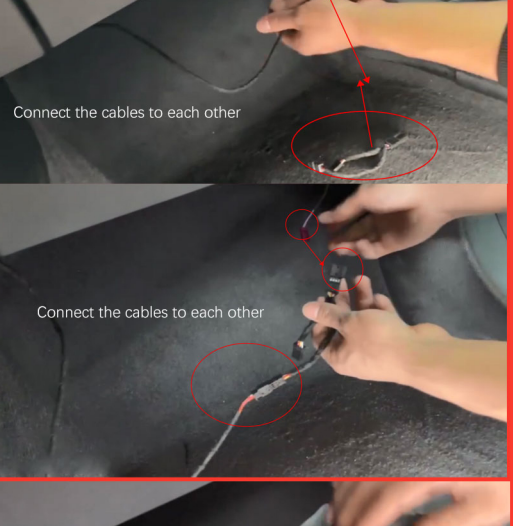
Align the cable for installation. Pay attention to the direction of the cable as in the photo



Install the back cover



Use a tool to pry up the co-pilot side cover (so that the ambient light wire can pass through)



Ambient light wires run through the co-pilot side cover



Reconnect the power to the center console

Reconnect the power to the center console

Tighten all the screws on the center console

Remove the co-pilot cover

Remove the co-pilot cover

Turn off the power

Tuck the cable into the co-pilot cover

Connect the cables to each other

Connect the cables to each other

Reconnect the power

Put the cover back on

Center console cover installed